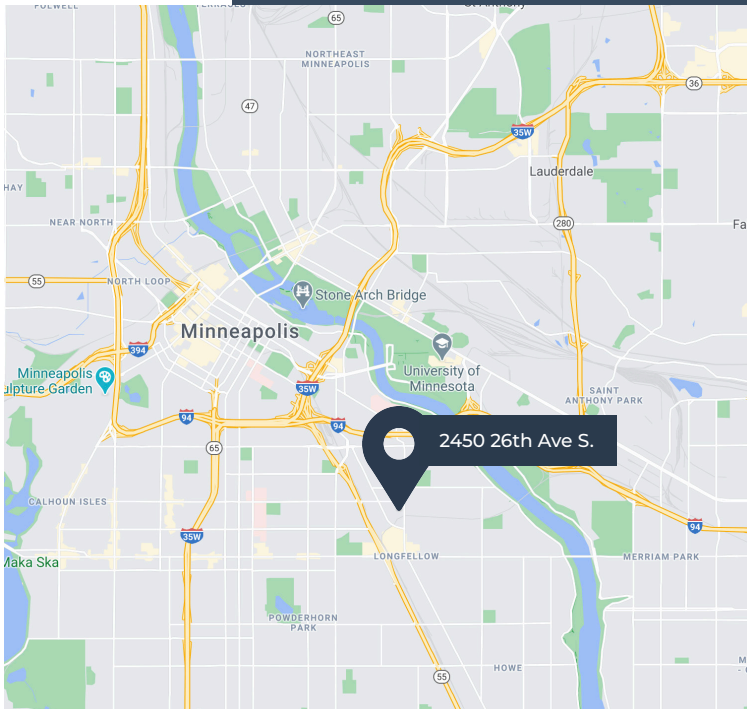


Former Fairview Home Hospice Headquarters

For Lease

Building one of a kind office environments that inspire creativity and maximize productivity.

📍 2450 26th Ave S. Minneapolis, MN 🏠 13,728 total SF

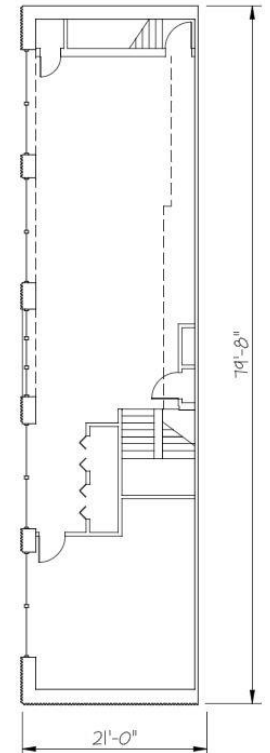
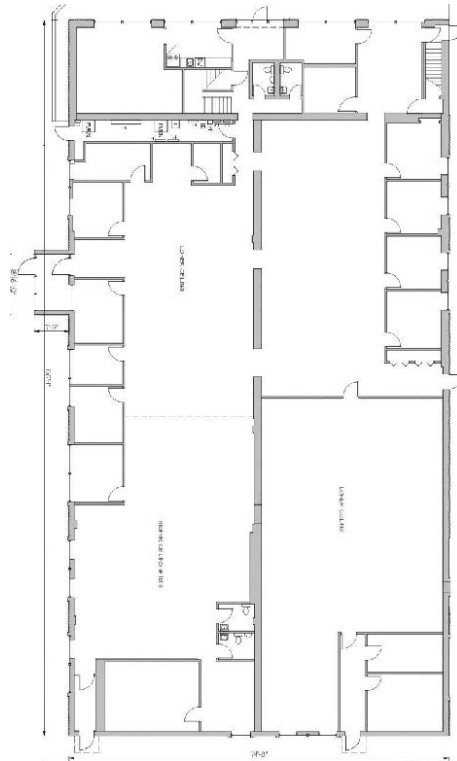


Overview

Former industrial building converted into an office for the Headquarters for Fairview. A creative and flexible space ready for plug and play. Wide open space with 14 ft clear overhead. Right next to Matthews park, centrally located off of Hiawatha in South Minneapolis. Surrounded by an abundance of coffee shops, Birchwood Cafe, Seward Co-op, and multiple other restaurants on Franklin Ave and Lake St.



Year Built	1970
Lot	.88 acres
Buildings	1
Parking	+/- 70
Gross Rent	\$17.82 per SF
Base Rent	\$11.17 per SF
Expenses	\$6.65 per SF



Main Level

Upper Level

For more information:
www.urbanmn.com

✉ chad@urbanmn.com
☎ (612) 554 - 8423

